



Hub Bore Dimension



Propeller Hub Taper 1:16

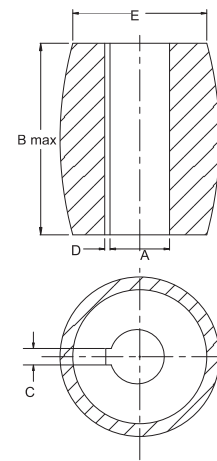
(unit: in)

Standard Taper	Dia. Small End(A)		Hub Length(B)	Moninal Keyway(D)	
				Width(C)	Depth(D)
3/4"	0.608	0.610	2-1/4"	3/16"	3-32"
7/8"	0.710	0.712	2-5/8"	1/4"	1/8"
1"	0.811	0.813	3"	1/4"	1/8"
1-1/8"	0.913	0.915	3-3/8"	1/4"	1/8"
1-1/4"	1.015	1.017	3-3/4"	5/16"	5/32"
1-3/8"	1.116	1.118	4-1/8"	5/16"	5/32"
1-1/2"	1.218	1.220	4-1/2"	3/8"	3/16"
1-3/4"	1.421	1.423	5-1/4"	7/16"	7/32"
2"	1.624	1.626	6"	1/2"	1/4"
2-1/4"	1.827	1.829	6-3/4"	9/16"	9/32"
2-1/2"	2.030	2.032	7-1/2"	5/8"	5/16"
2-3/4"	2.233	2.235	8-1/4"	5/8"	5/16"
3"	2.437	2.439	9"	3/4"	5/16"
3-1/4"	2.640	2.642	9-3/4"	3/4"	5/16"
3-1/2"	2.843	2.845	10-1/2"	7/8"	5/16"
3-3/4"	3.046	3.048	11-1/4"	7/8"	5/16"
4"	3.249	3.251	12"	1"	5/16"
4-1/2"	3.796	3.798	11-1/4"	1-1/8"	3/8"
5"	4.218	4.220	12-1/2"	1-1/4"	7/16"
5-1/2"	4.640	4.642	13-3/4"	1-1/4"	7/16"
6"	4.749	4.751	15"	1-3/8"	1/2"
6-1/2"	5.145	5.147	16-1/4"	1-3/8"	1/2"
7"	5.541	5.543	17-1/2"	1-1/2"	9/16"
7-1/2"	5.937	5.939	18-3/4"	1-1/2"	9/16"
8"	6.332	6.334	20"	1-3/4"	9/16"

SAE Standard Tapers

NOTES:

1. Shafts and bores to 6" and diameter have taper of 3/4" /ft. on the diameter 1/16"/inch. 1 degree 47'23" angel with centerline.
2. Shafts and bores 6" and larger have taper of 1"/ft. on diameter.
3. For intermediate size, refer to SEA Handbook or contact us.
4. Propeller hub length generally is less than maximum "B".
5. Oversea specification on request.

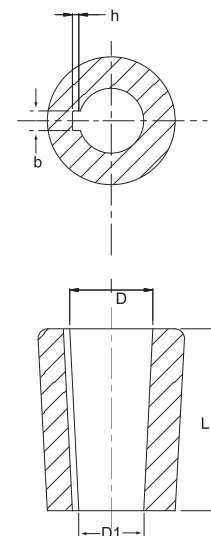


Taper 1:16

Propeller Hub Taper 1 : 10

(unit: mm)

Shaft Dia.	Big Dia. D	Small Dia. D1	Length L	Keyway	
				b	h
20	20	15	50	6	3
25	25	19	60	6	3
30	30	22	80	8	4
35	35	26	90	10	4
40	40	30	100	12	4
45	45	34	110	14	5.5
50	50	38	120	14	5.5
55	55	42	130	16	5.5
60	60	46	140	16	5.5
65	65	50	150	18	5.5
70	70	54	160	18	5.5
75	74.5	57.5	170	20	6
80	79.5	61.5	180	20	6
85	84.5	65.5	190	22	7
90	89.5	69.5	200	22	7
95	94.5	73.5	210	25	7
100	99	77	220	25	7
110	109	85	240	28	7.5
120	119	93	260	32	8.5
130	129	101	280	36	9.5
140	139	109	300	36	9.5
150	149	117	320	36	9.5
160	159	125	340	40	10.5



Taper 1:10